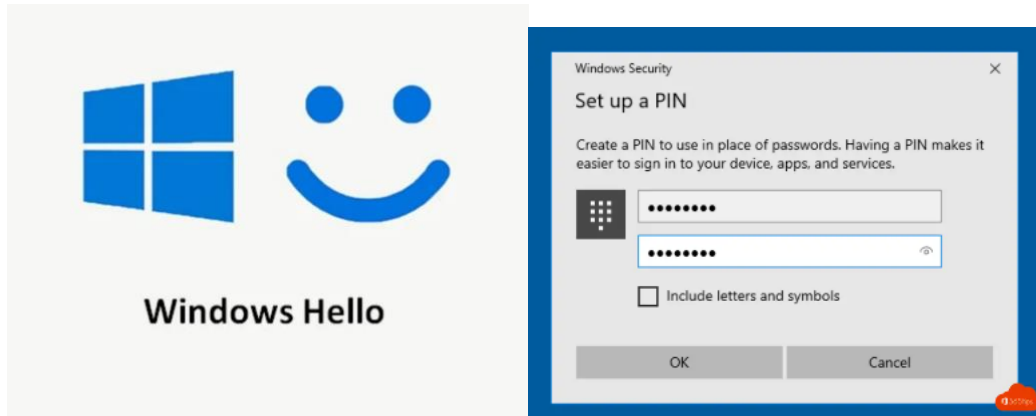


Setting up a university computer

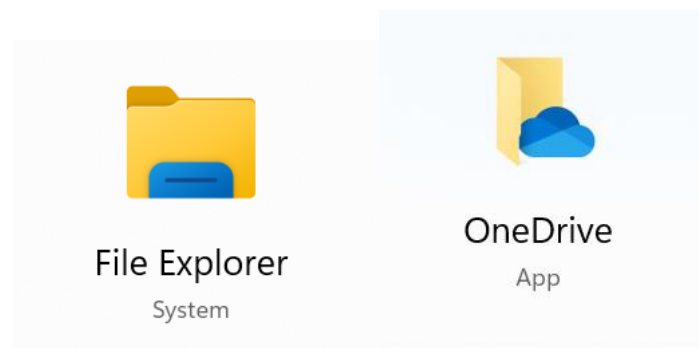
Follow this Quick Start Guide to set up your new Windows computer.

Turn on the power, connect the computer to the network, and log in to the computer using your own university username and password.



Create a PIN code to ease login; from now on, you will primarily log in using this code. Password login is also available to you. If you wish, instead of a password, you can also enable face recognition or fingerprint authentication as a Windows Hello feature. In any case, a PIN code must be set.

File management and storage spaces

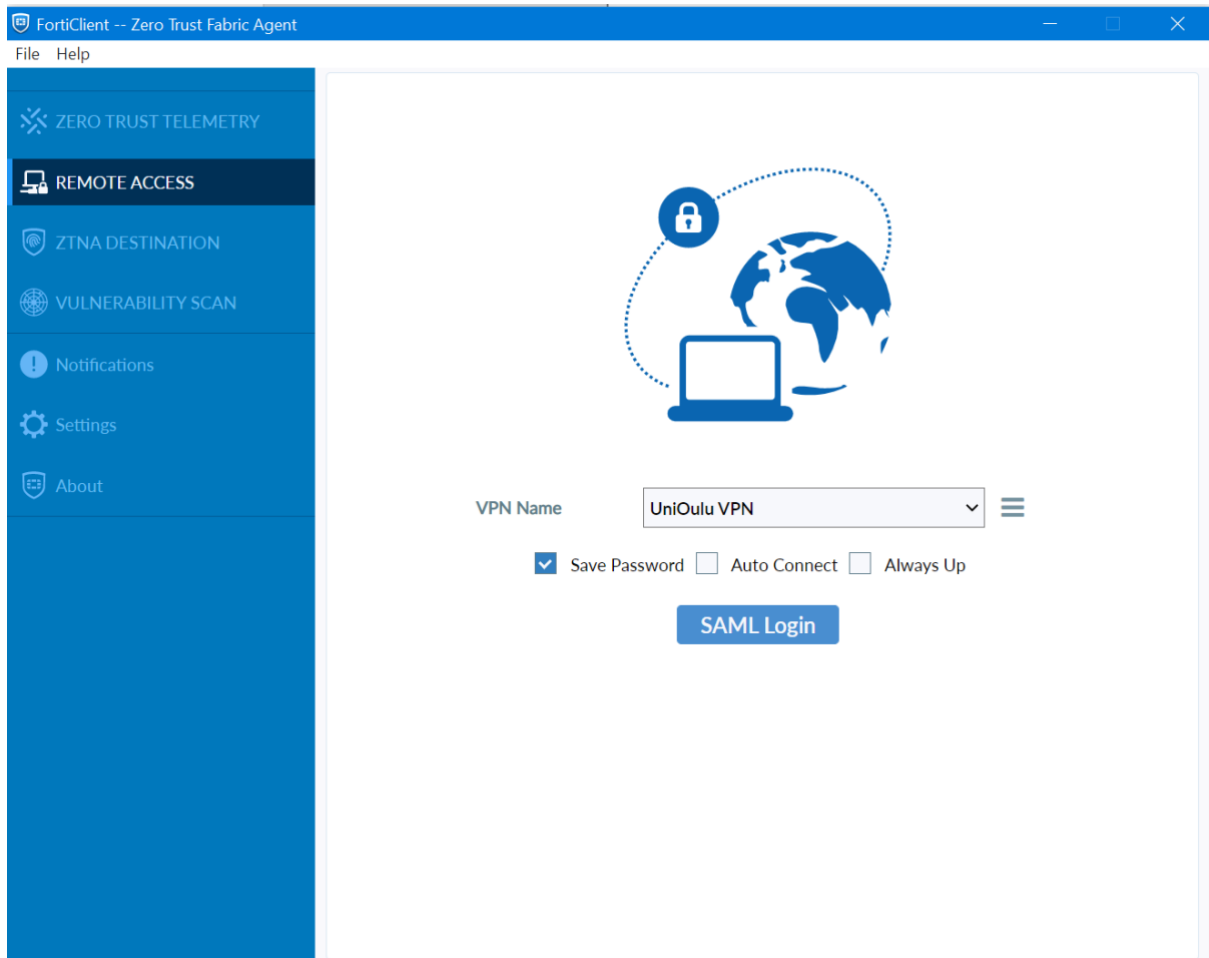


OneDrive is the default storage space recommended by ICT services (5TB). Find OneDrive using the Windows search function and login using format account@univ.yo oulu.fi.

If necessary, you can also add your old home directory (K:) to file management using the Map Network Drive function. Request the path to your home directory from ICT services or use the home directory through the browser from Lehmus, <https://lehmus oulu.fi>, under Files.

Your faculty's shared disk space, drive S:, is automatically connected to your file management view. Using the K: and S: drives requires a secure VPN connection.

A VPN software, FortiClient, has been pre-installed on the computer. Open the FortiClient software from your desktop and select UniOulu VPN, check the Save Password box, and then click SAML Login.

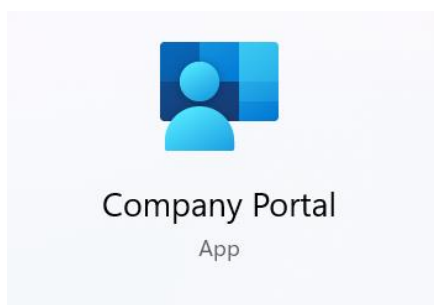


Log in to the VPN service using your `account@univ.yo.oulu.fi` account and password and the two-factor authentication method (MFA) you have chosen.

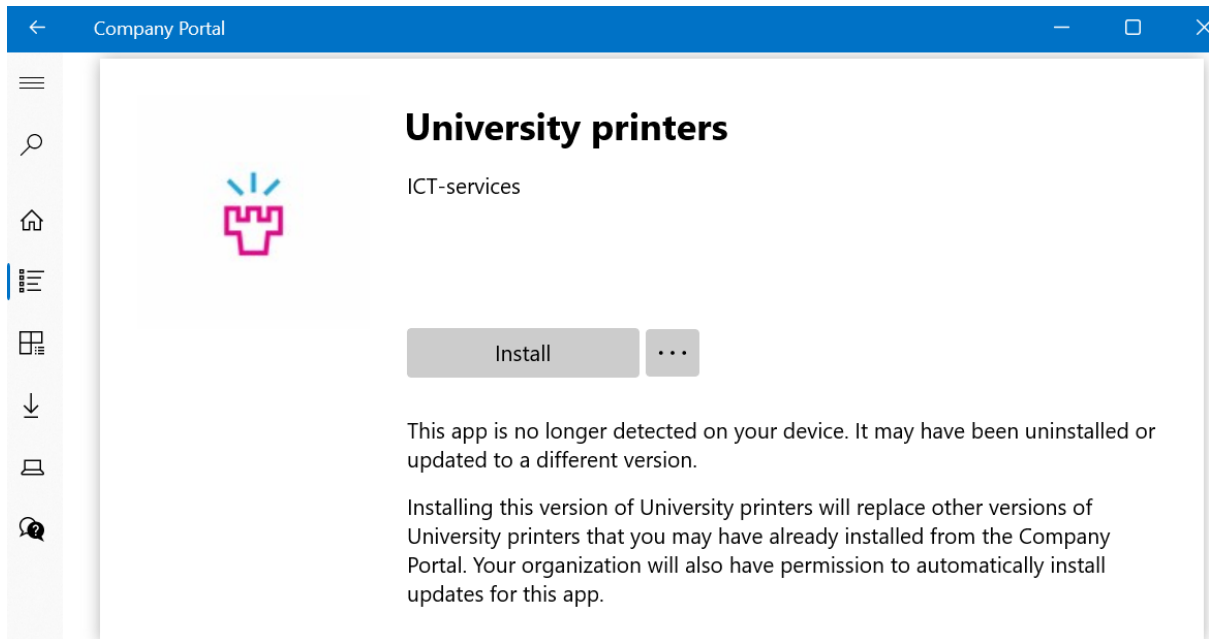
Note! You can also install the OpenVPN software yourself from a Company Portal -service. You need an eduvpn profile to use the program. You can use your previous profile, or you can create a new profile according to the instructions at <https://ict.oulu.fi/16831>.

Installing software's and printing

You can install more software's on your computer from the Company Portal service. You can find it by typing the words Company Portal into the Windows search field (Search). Select the software you need and install it by clicking Install. Microsoft Office applications and the FortiClient VPN software are pre-installed on the computer.



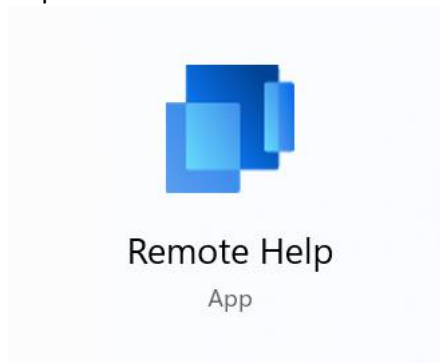
Also add printer queues to your use by installing the University Printers software from the Company Portal (requires a VPN connection).



Find and open Microsoft Outlook, Teams, and OneDrive (requires login), you can find them using the search function.

Log in to your Chrome or Edge profile or import your saved bookmarks from your old computer to the browser of your choice.

ICT services can help, if necessary, by taking a remote connection to your machine with the Remote Help -software.



In case of a problem

ICT Services is happy to help if you have any questions or encounter a problem when setting up your new computer. You can send a support request or call our support service during opening hours. From the ICT Services public IT instruction website, you can find our current opening hours as well as information and instructions on many kinds of questions.

Support requests: ict@oulu.fi

Phone: 0294 483124

ICT Services instruction page: <http://ict.oulu.fi>